



11 Carisbrook Close, Enfield, EN1 3NA
Offers In Excess Of £550,000



11 Carisbrook Close, Enfield, EN1 3NA

Nestled in the sought-after Willow Estate, Carisbrook Close in Enfield presents a delightful opportunity to acquire a charming semi-detached house. This extended end-of-terrace property boasts three bedrooms, making it an ideal family home.

Upon entering, you are welcomed into a spacious reception room. The house features two bathrooms, including a convenient ground floor shower room and a first-floor bathroom, ensuring ample facilities for the household.

The property also benefits from off-street parking, along with a garage that is easily accessible via a shared driveway, providing both convenience and security for your vehicles.

One of the standout features of this home is the south-westerly facing rear garden, which offers a lovely outdoor space to enjoy the sunshine and entertain guests during the warmer months.

With its prime location on the popular Willow Estate, this property is well-positioned for local amenities, schools, and transport links, making it an excellent choice for families and professionals alike.

In summary, this three-bedroom semi-detached house on Carisbrook Close is a wonderful opportunity for those seeking a comfortable and well-located family home in Enfield.



Hallway

Lounge

22'9" x 11'0" narrowing to 10'7" (6.93m x 3.35m narrowing to 3.23m)

Kitchen

10'3" x 12'0" narrowing to 10'7" (3.12m x 3.66m narrowing to 3.23m)

Shower Room 6'7" x 6'4" (2.01m x 1.93m)

First Floor Landing

Bedroom One 13'1" x 10'7" (3.99m x 3.23m)

Bedroom Two 9'7" x 9'5" (2.92m x 2.87m)

Bedroom Three 7'3" x 5'11" (2.21m x 1.80m)

Bathroom 5'9" x 5'8" (1.75m x 1.73m)

Front Garden

Driveway

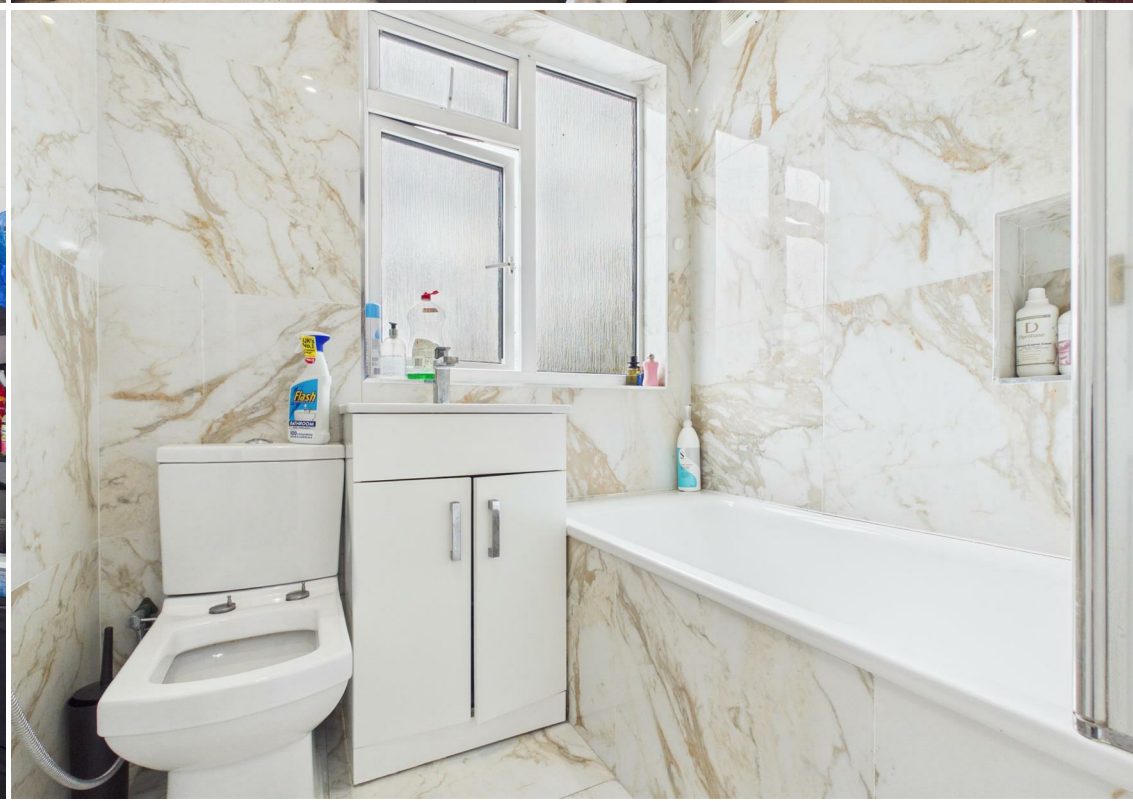
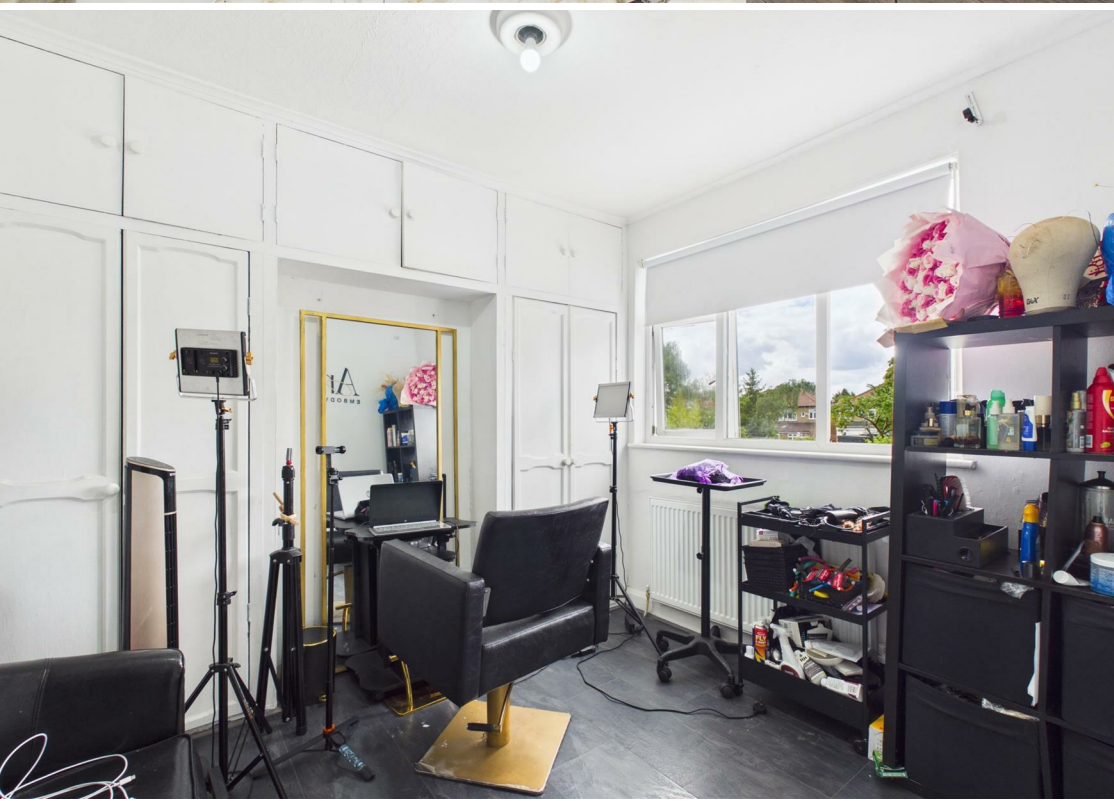
Rear Garden

South westerly facing

Garage 16'3" x 8'1" (4.95m x 2.46m)

Lanes Estate Agents Enfield Reference Number

ET5339/AX/AX/AX/080626







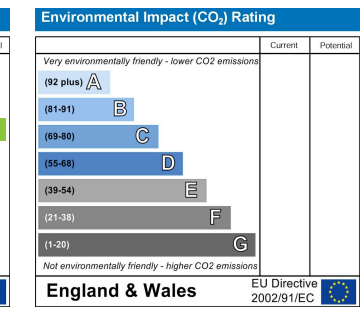
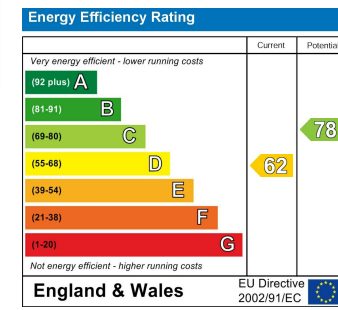
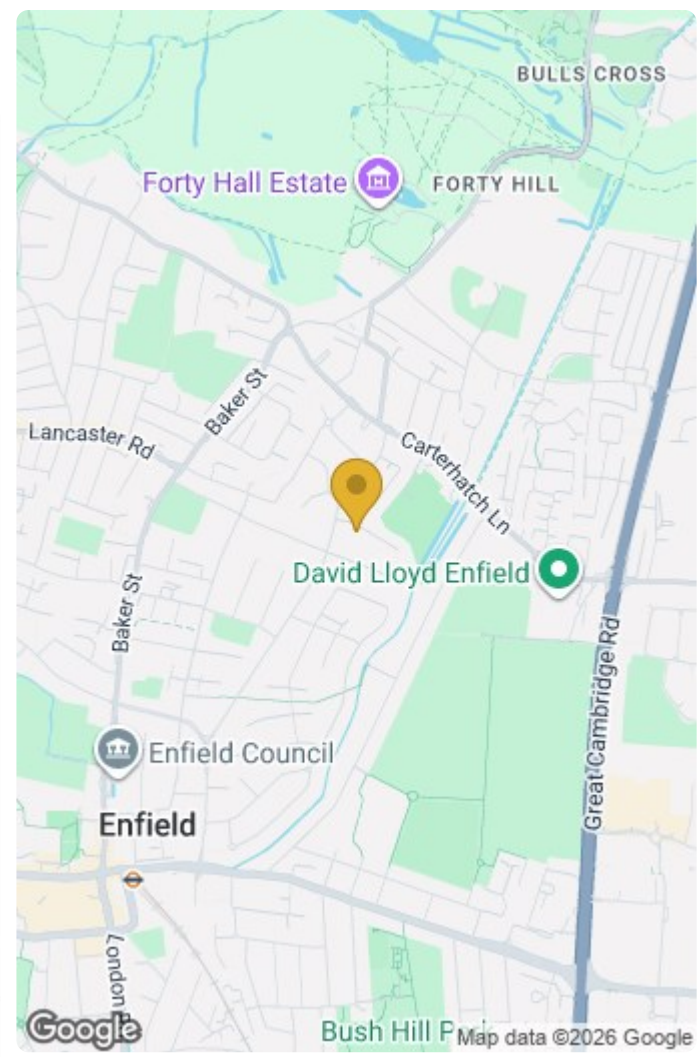
Lanes
ESTATE AGENTS

Approximate total area^m
83.8 m²
903 ft²

(1) Excluding balconies and terraces

Calculations reference the RICS IPMS 3C standard. Measurements are approximate and not to scale. This floor plan is intended for illustration only.

GIRAFFE360



IMPORTANT NOTICE TO PROSPECTIVE PURCHASERS

We are not qualified to test any apparatus, equipment, fixtures and fittings or services so cannot that they are in working order or fit for their intended purpose. We do not have access to property deeds or lease documents so prospective purchasers should rely only on information given by their solicitors on relevant matters. Measurements are approximate and are only intended to provide a guide.

