



67 Landau Way, Broxbourne, EN10 6LP
£205,000



67 Landau Way, Broxbourne, EN10 6LP

This one-bedroom first-floor flat is located on Landau Way in Broxbourne, close to Brookfield Retail Park and its range of shops, restaurants and leisure facilities.

The property offers a comfortable living space with a good-sized Lounge/Diner, a bright double bedroom and a practical bathroom. It also benefits from allocated parking for one vehicle.

A further advantage is the long lease, which can offer added long-term security for buyers.

Well suited to first-time buyers, couples or investors, this flat is conveniently located for local amenities and transport links.



Entrance Hall

Lounge/Diner 18'8" x 9'6" (5.69m x 2.90m)

Kitchen 8'1" x 7'1" (2.46m x 2.16m)

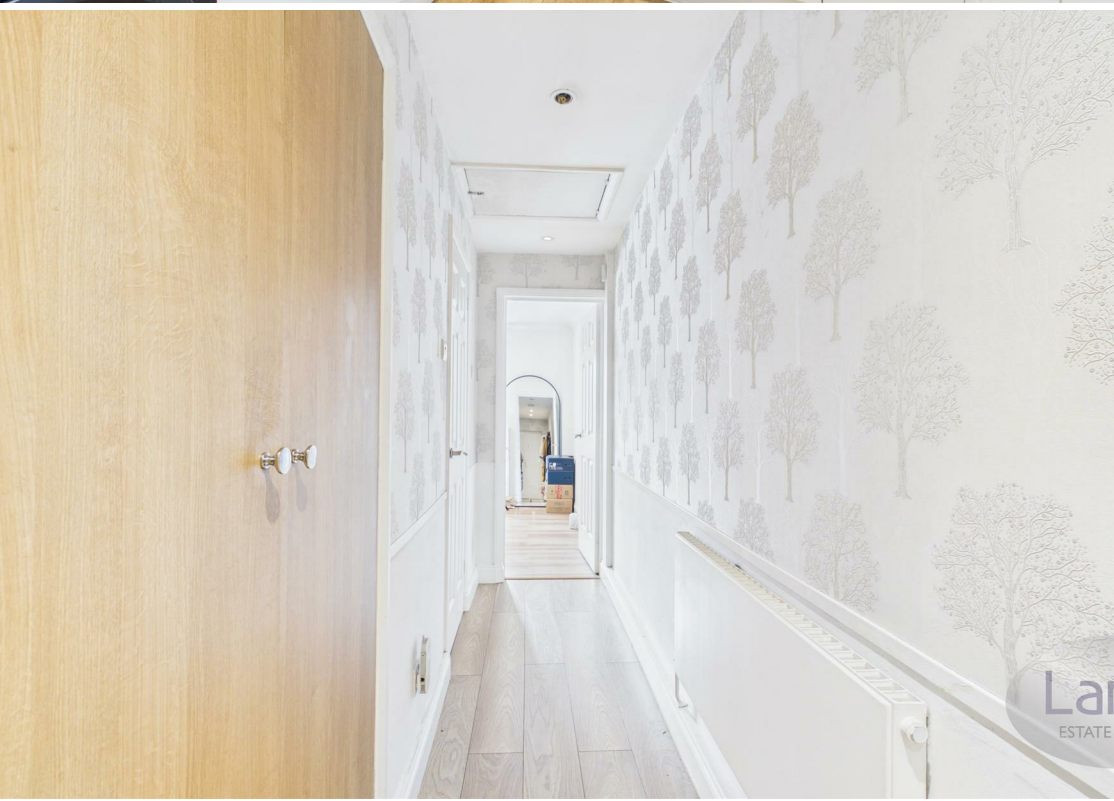
Bedroom 12'9" x 8'5" (3.89m x 2.57m)

Bathroom

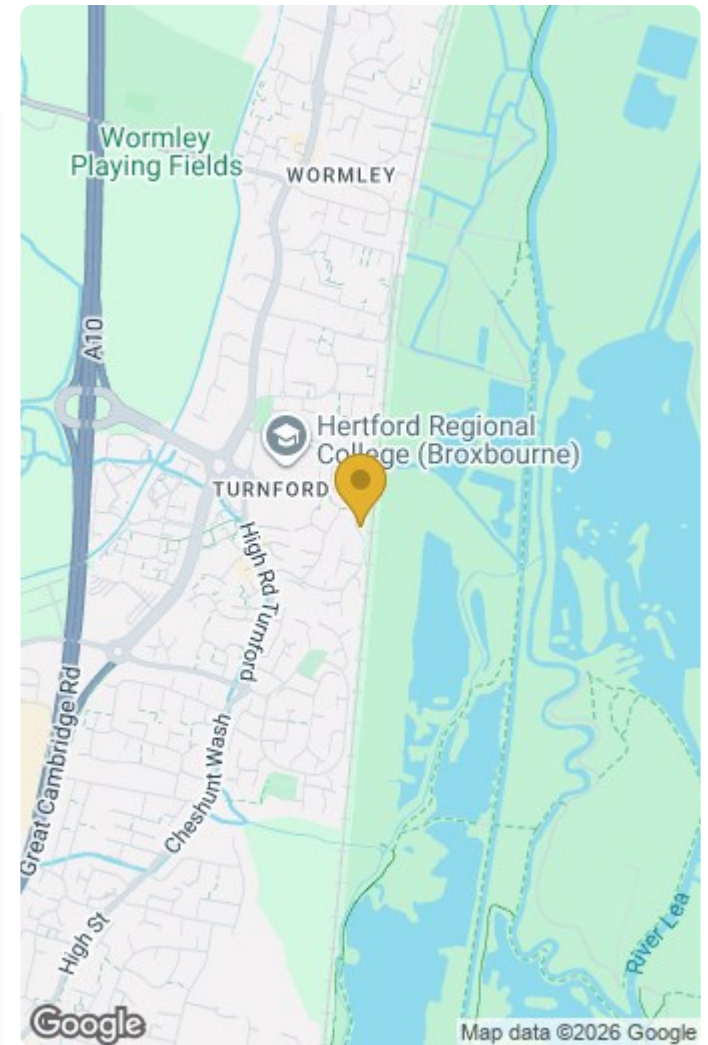
Allocated Parking

REFERENCE

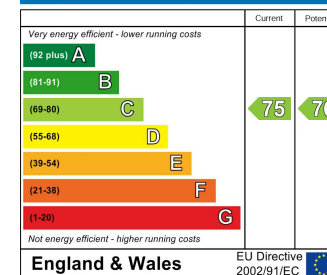
CH6673 LANES BROXBOURNE ESTATE AGENTS, Please note there is a fitted wardrobe in the bedroom.



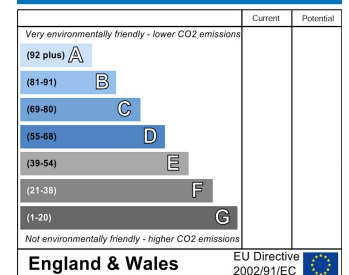




Energy Efficiency Rating



Environmental Impact (CO₂) Rating



IMPORTANT NOTICE TO PROSPECTIVE PURCHASERS

We are not qualified to test any apparatus, equipment, fixtures and fittings or services so cannot that they are in working order or fit for their intended purpose. We do not have access to property deeds or lease documents so prospective purchasers should rely only on information given by their solicitors on relevant matters. Measurements are approximate and are only intended to provide a guide.

17 College Road, Cheshunt, Hertfordshire, EN8 9LS

Tel: 01992 620 101 Email: ch@lanesproperty.co.uk www.lanesproperty.co.uk

