



132, Mahon Close, Enfield, EN1 4DL

£350,000



132, Mahon Close, Enfield, EN1 4DL

Welcome to this charming one-bedroom mid-terrace house located on Mahon Close in Enfield. This modern property offers a delightful living space, perfect for individuals or couples seeking a comfortable home.

As you enter, you will find a well-proportioned reception room that provides a warm and inviting atmosphere. The property features a contemporary design, ensuring a stylish yet functional living experience.

The bedroom is generously sized, offering ample space for furnishings and personal touches. The first-floor bathroom is conveniently located, providing privacy and ease of access.

One of the standout features of this home is the beautifully landscaped front garden, which adds to the property's curb appeal and provides a lovely outdoor space to enjoy. Additionally, the property includes allocated parking for one vehicle, a valuable asset in this area.

Situated in close proximity to the David Lloyd Enfield, residents can enjoy a range of leisure facilities, while the nearby A10 road network offers excellent transport links for commuting and exploring the wider region.

This property presents an excellent opportunity for those looking to embrace modern living in a convenient location. Do not miss the chance to make this delightful house your new home.



Lobby

Lounge

16'4" x 14'9" (4.98m x 4.50m)

Kitchen

7'0" x 6'4" (2.13m x 1.93m)

First Floor Landing

Bedroom One

(to fitted wardrobe)

11'1" x 9'2" (3.38m x 2.79m)

Bathroom

8'5" x 4'8" (2.57m x 1.42m)

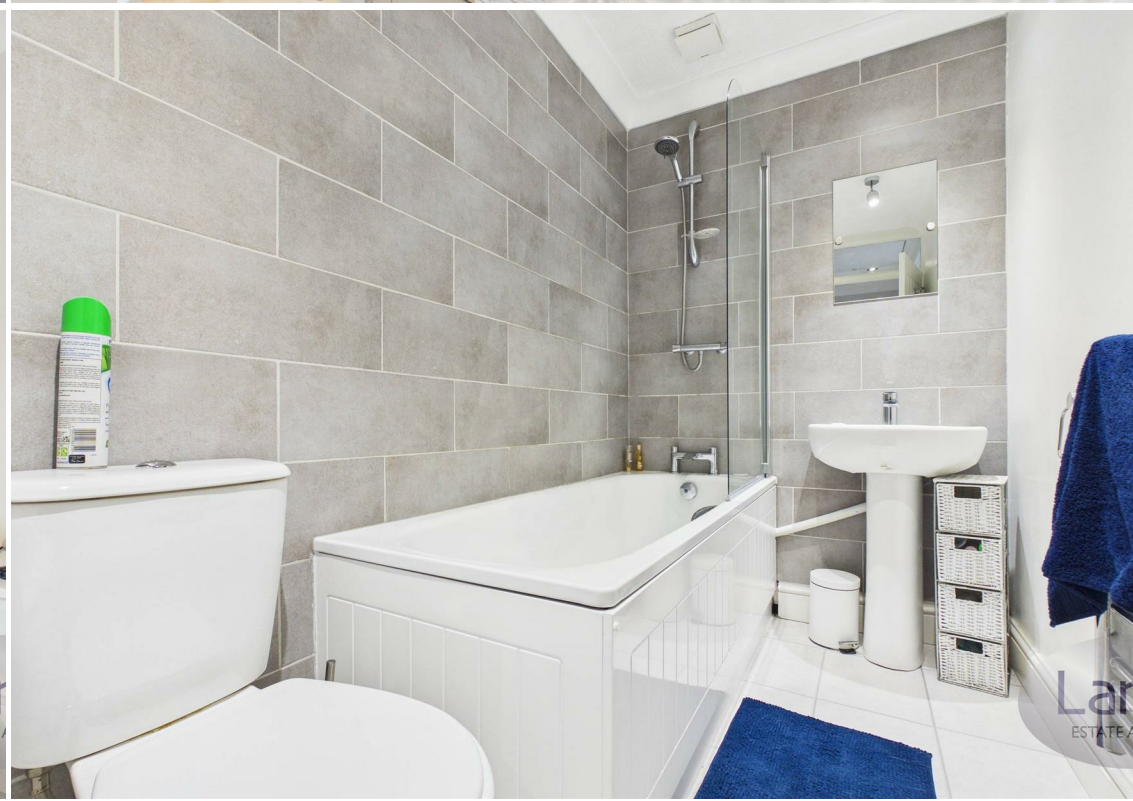
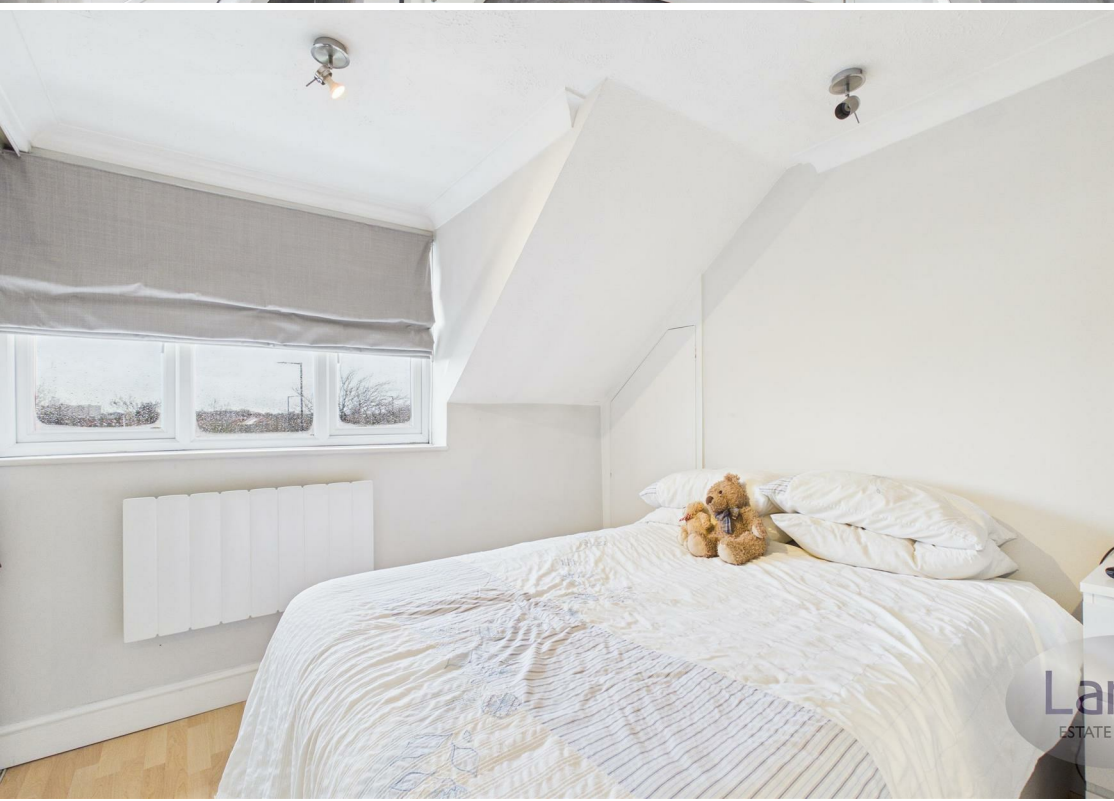
Front Garden

Landscaped

Allocated Parking

Lanes Estate Agents Enfield Reference Number

ET5316/AX/AX/AX/020326







Floor 0



Floor 1



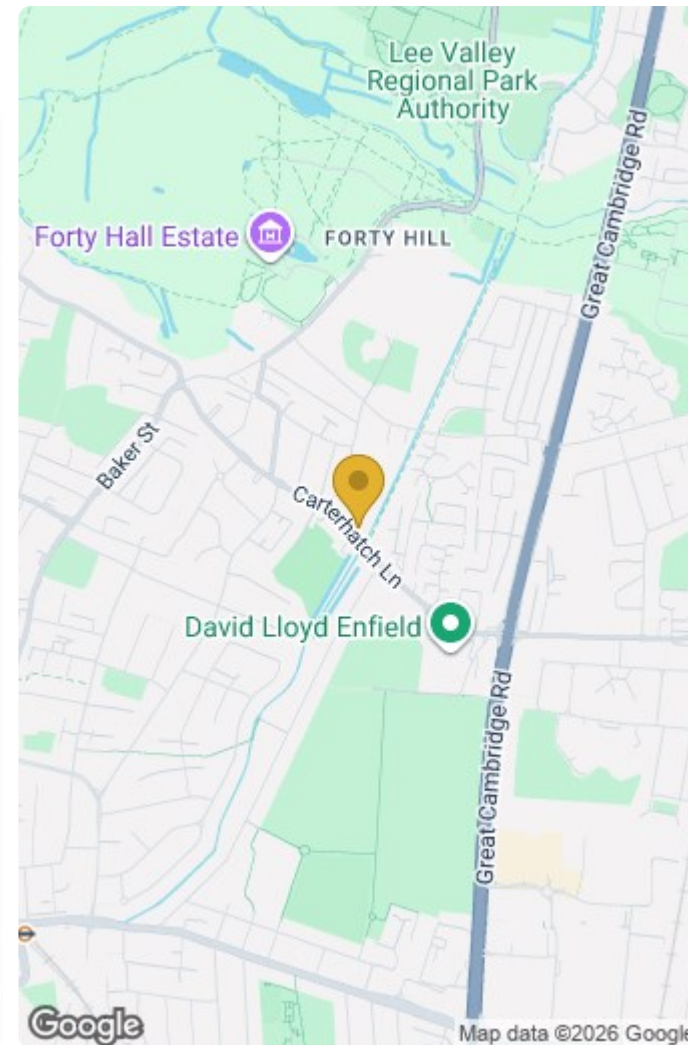
Approximate total area^m

41.9 m²
451 ft²

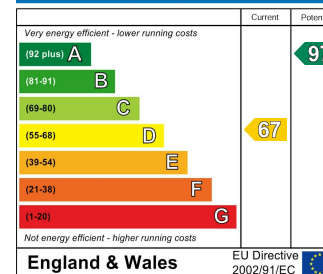
(1) Excluding balconies and terraces

Calculations reference the RICS IPMS 3C standard. Measurements are approximate and not to scale. This floor plan is intended for illustration only.

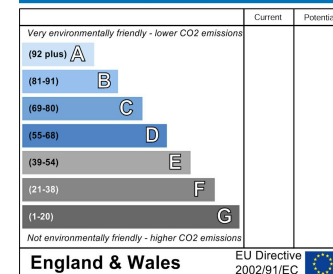
GIRAFFE 360



Energy Efficiency Rating



Environmental Impact (CO₂) Rating



IMPORTANT NOTICE TO PROSPECTIVE PURCHASERS

We are not qualified to test any apparatus, equipment, fixtures and fittings or services so cannot that they are in working order or fit for their intended purpose. We do not have access to property deeds or lease documents so prospective purchasers should rely only on information given by their solicitors on relevant matters. Measurements are approximate and are only intended to provide a guide.

7 Savoy Parade Southbury Road, Enfield, EN1 1RT

Tel: 020 8342 0101 Email: et@lanesproperty.co.uk www.lanesproperty.co.uk

