



6 Thrush Court Queens Road, Enfield, EN1 1NH

£275,000

Lanes
ESTATE AGENTS

6 Thrush Court Queens Road, Enfield, EN1 1NH

Welcome to this charming recently refurbished one-bedroom first floor apartment located in the desirable Thrush Court on Queens Road, Enfield. This delightful property offers a perfect blend of comfort and convenience, making it an ideal choice for first-time buyers or savvy investors.

As you enter the apartment, you will find a well-proportioned reception room that provides a warm and inviting space for relaxation or entertaining guests. The south-facing Juliette balcony allows natural light to flood the room, creating a bright and airy atmosphere. The bedroom is generously sized with fitted wardrobes, offering a peaceful retreat at the end of the day, while the bathroom is fitted with modern fixtures, ensuring both style and functionality.

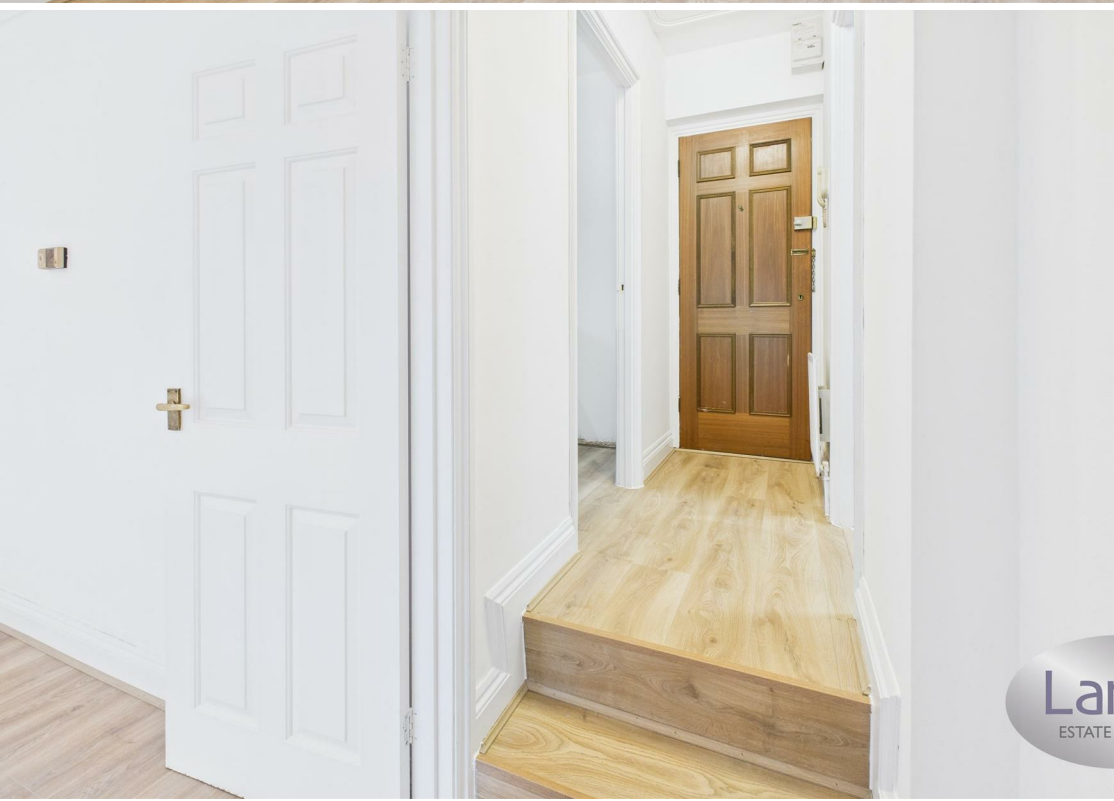
One of the standout features of this property is the allocated parking, a rare find in such a central location. You will appreciate the ease of access to Enfield Town's shopping centre and transport facilities, which are just a stone's throw away. This prime location ensures that you are never far from a variety of shops, restaurants, and excellent transport links, making commuting a breeze.

This apartment is chain-free, and keys are held, allowing for a smooth and swift transaction. Whether you are looking to make your first step onto the property ladder or seeking a lucrative investment opportunity, this apartment ticks all the boxes. Do not miss the chance to view this lovely home in a vibrant and well-connected area.



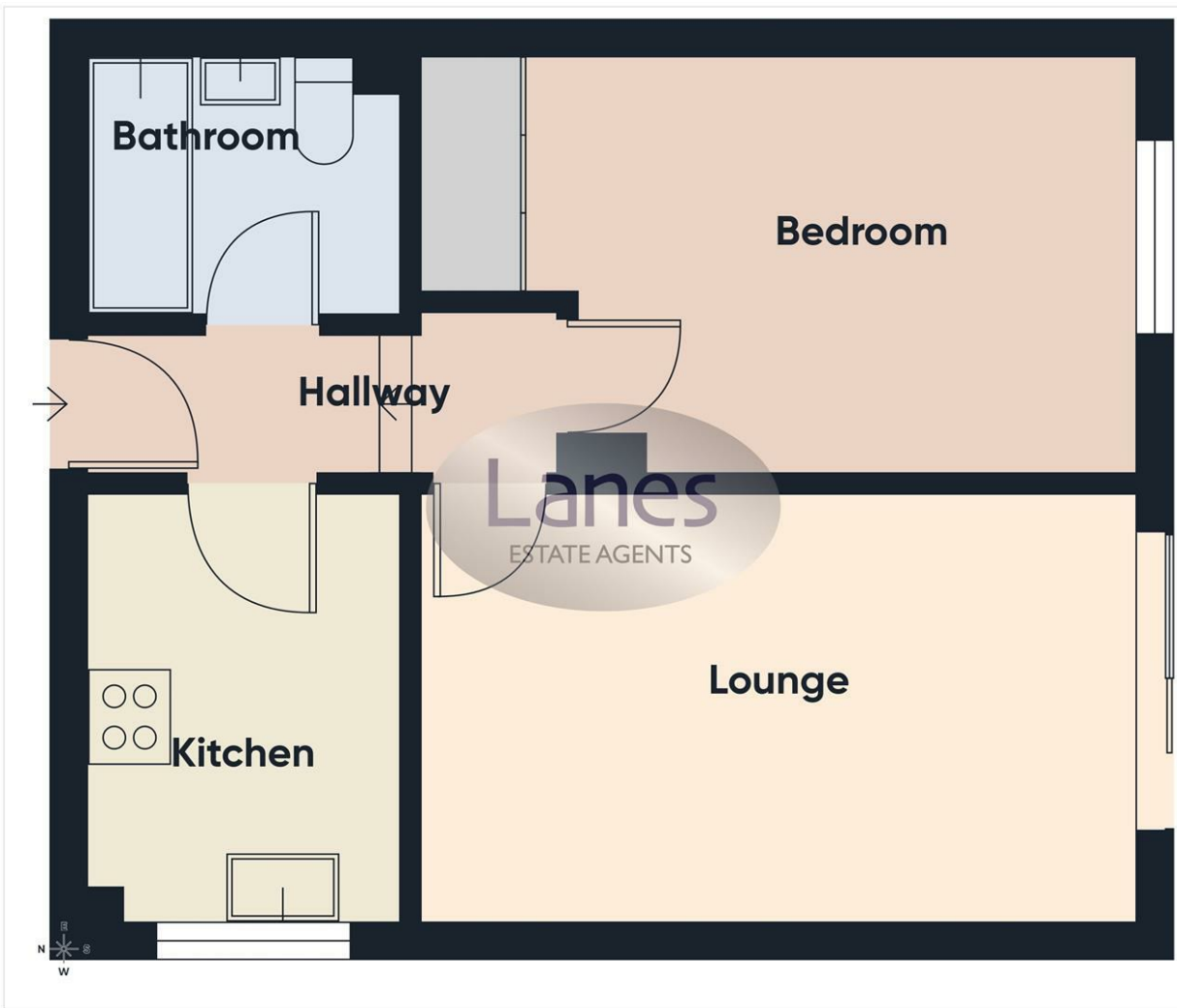
Hallway	
Lounge	14'8" x 8'8" (4.47m x 2.64m)
Kitchen	8'9" x 6'7" (2.67m x 2.01m)
Bedroom (to fitted wardrobe)	12'6" x 8'8" (3.81m x 2.64m)
Bathroom	6'2" x 5'5" (1.88m x 1.65m)

Lanes Estate Agents Enfield Reference Number
ET5304/AX/AX/AX/181225





Lar
ESTATE A



Approximate total area⁽¹⁾
34.2 m²

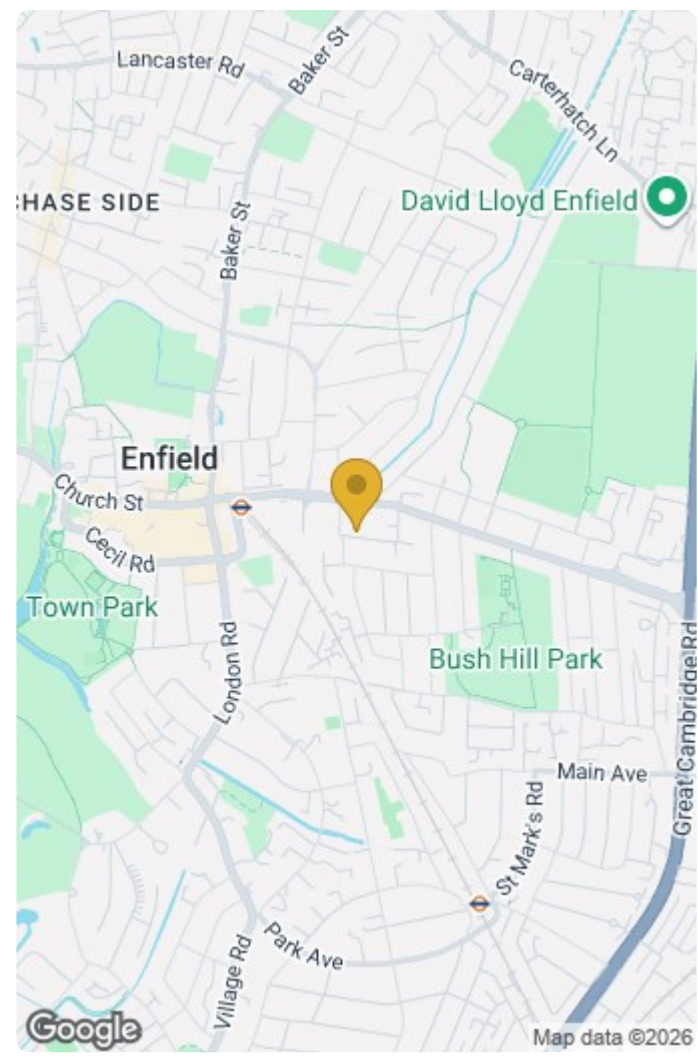
(1) Excluding balconies and terraces

Calculations reference the RICS IPMS 3C standard. Measurements are approximate and not to scale. This floor plan is intended for illustration only.

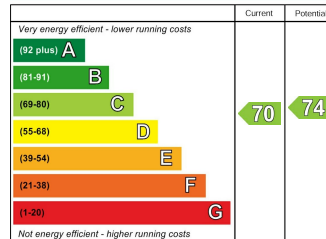
GIRAFFE360

IMPORTANT NOTICE TO PROSPECTIVE PURCHASERS

We are not qualified to test any apparatus, equipment, fixtures and fittings or services so cannot that they are in working order or fit for their intended purpose. We do not have access to property deeds or lease documents so prospective purchasers should rely only on information given by their solicitors on relevant matters. Measurements are approximate and are only intended to provide a guide.

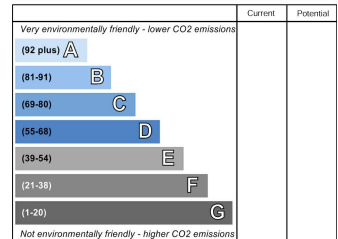


Energy Efficiency Rating



England & Wales EU Directive 2002/91/EC

Environmental Impact (CO₂) Rating



England & Wales EU Directive 2002/91/EC

7 Savoy Parade Southbury Road, Enfield, EN1 1RT

Tel: 020 8342 0101 Email: et@lanesproperty.co.uk www.lanesproperty.co.uk

