



Estate Agents • Lettings • Land & New Homes



24 The Cedars, Broxbourne, EN10 6FX

£269,500

Welcome to this charming two-bedroom flat located in the desirable area of The Cedars, Broxbourne. This property offers a perfect blend of comfort and convenience, making it an ideal choice for individuals or small families seeking a modern living space.

The layout allows for a seamless flow between the living and dining spaces, creating an inviting atmosphere. Natural light floods the room, enhancing the sense of space and warmth.

The flat features two well-proportioned bedrooms, providing ample space for rest and personalisation. The modern bathroom is tastefully designed, offering a tranquil retreat for your daily routines.

One of the standout features of this property is the allocated parking space, ensuring that you have a secure and convenient place for your vehicle. Additionally, the flat's location is particularly advantageous, as it is situated in close proximity to Brookfield Retail Park. This means you will have easy access to a variety of shops, restaurants, and leisure facilities, making everyday errands a breeze.



Entrance Hall

Open Plan Living Area

Kitchen Area

Bedroom One

Bedroom Two

Bathroom

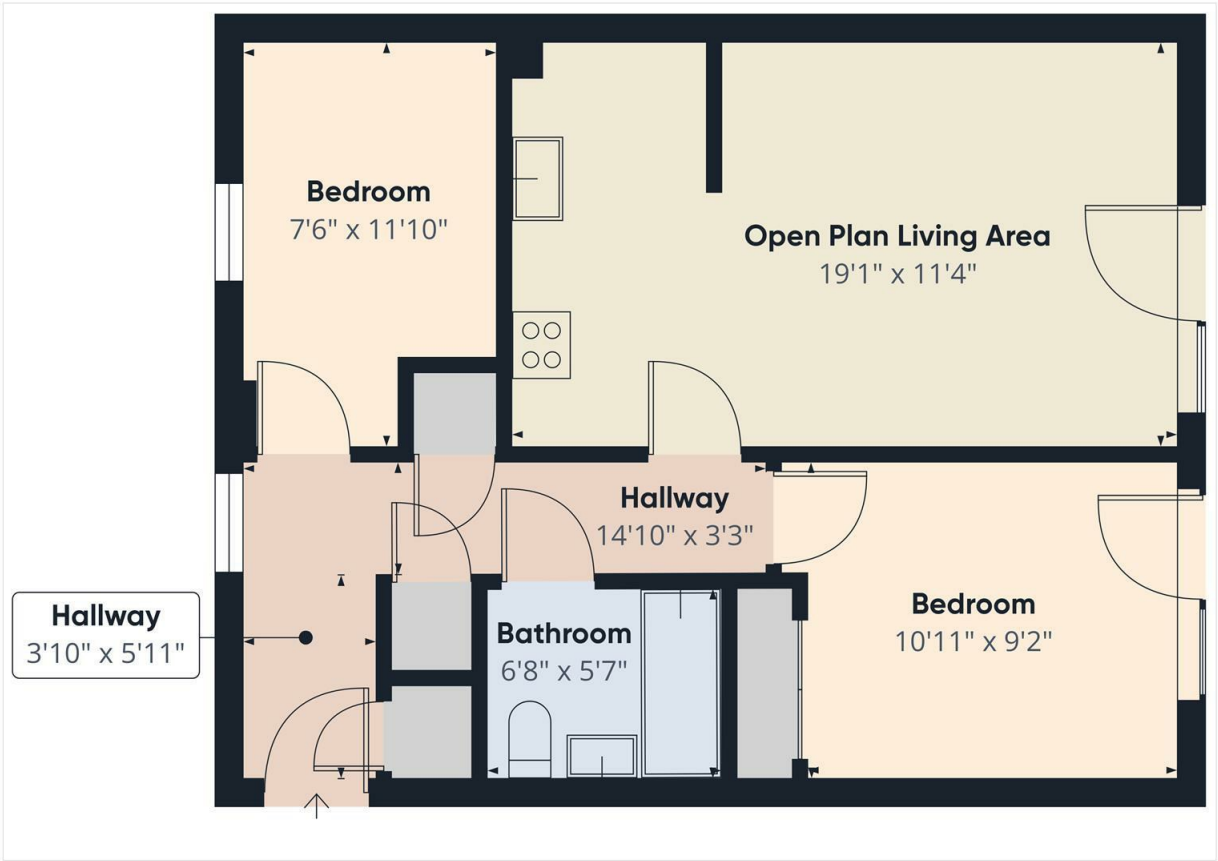
Allocated Parking Space

REFERENCE

CH6552 LANES CHESHUNT AND BROXBOURNE
ESTATE AGENTS

Energy Efficiency Rating		
	Current	Potential
Very energy efficient - lower running costs		
(92 plus) A		
(81-91) B		
(69-80) C		
(55-68) D		
(39-54) E		
(21-38) F		
(1-20) G		
Not energy efficient - higher running costs		
England & Wales		EU Directive 2002/91/EC

Environmental Impact (CO ₂) Rating		
	Current	Potential
Very environmentally friendly - lower CO ₂ emissions		
(92 plus) A		
(81-91) B		
(69-80) C		
(55-68) D		
(39-54) E		
(21-38) F		
(1-20) G		
Not environmentally friendly - higher CO ₂ emissions		
England & Wales		EU Directive 2002/91/EC



IMPORTANT NOTICE TO PROSPECTIVE PURCHASERS

We are not qualified to test any apparatus, equipment, fixtures and fittings or services so cannot confirm that they are in working order or fit for their intended purpose. We do not have access to property deeds or lease documents so prospective purchasers should rely only on information given by their solicitors on relevant matters. Measurements are approximate and are only intended to provide a guide.

