



2 Bengoe Mews, Hertford, SG14 3TL
Offers Over £250,000



2 Bengoe Mews, Hertford, SG14 3TL

****EXTENDED LEASE**/**CHAIN FREE**** This is a fantastic opportunity to purchase a first floor purpose built flat in a very sought after location within the popular location of Bengoe. This property also has the added benefit of an extended lease taking it to 160 years.

Situated in a private turning, there is one allocated parking space and additional visitors spaces. The grounds are also well maintained to a high standard. Internally the property boasts one bedroom, bathroom, kitchen as well as a spacious lounge and is also offered on a Chain Free basis. This is an ideal First Time Buy or Investment and should be viewed ASAP.



Lounge	15 x 14'5 (4.57m x 4.39m)
Kitchen	8'2 x 5'11 (2.49m x 1.80m)
Bedroom	11'9 x 10'8 (3.58m x 3.25m)



Approximate Gross Internal Area
48.03 sq m / 516.99 sq ft

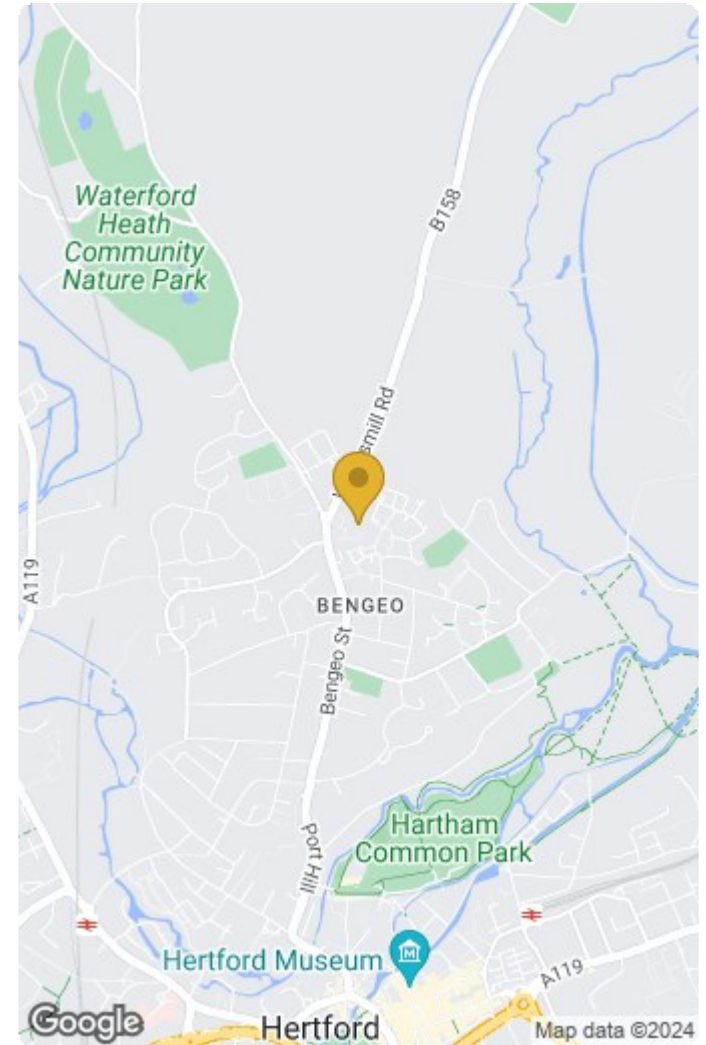
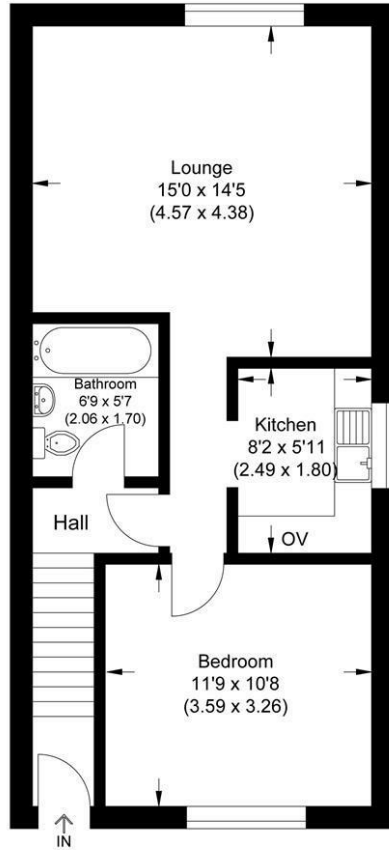


Illustration for identification purposes only, measurements are approximate, not to scale.

IMPORTANT NOTICE TO PROSPECTIVE PURCHASERS

We are not qualified to test any apparatus, equipment, fixtures and fittings or services so cannot that they are in working order or fit for their intended purpose. We do not have access to property deeds or lease documents so prospective purchasers should rely only on information given by their solicitors on relevant matters. Measurements are approximate and are only intended to provide a guide.

