



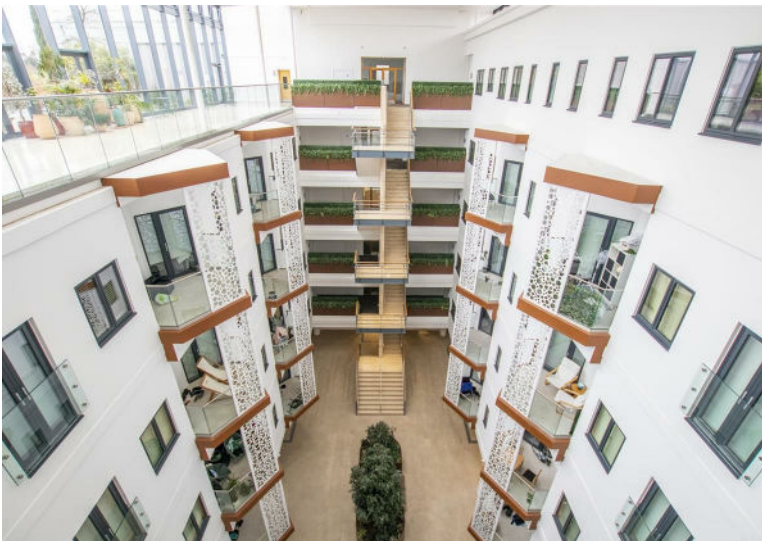
Edinburgh Gate, Harlow, CM20 2GS  
Offers In Excess Of £199,000



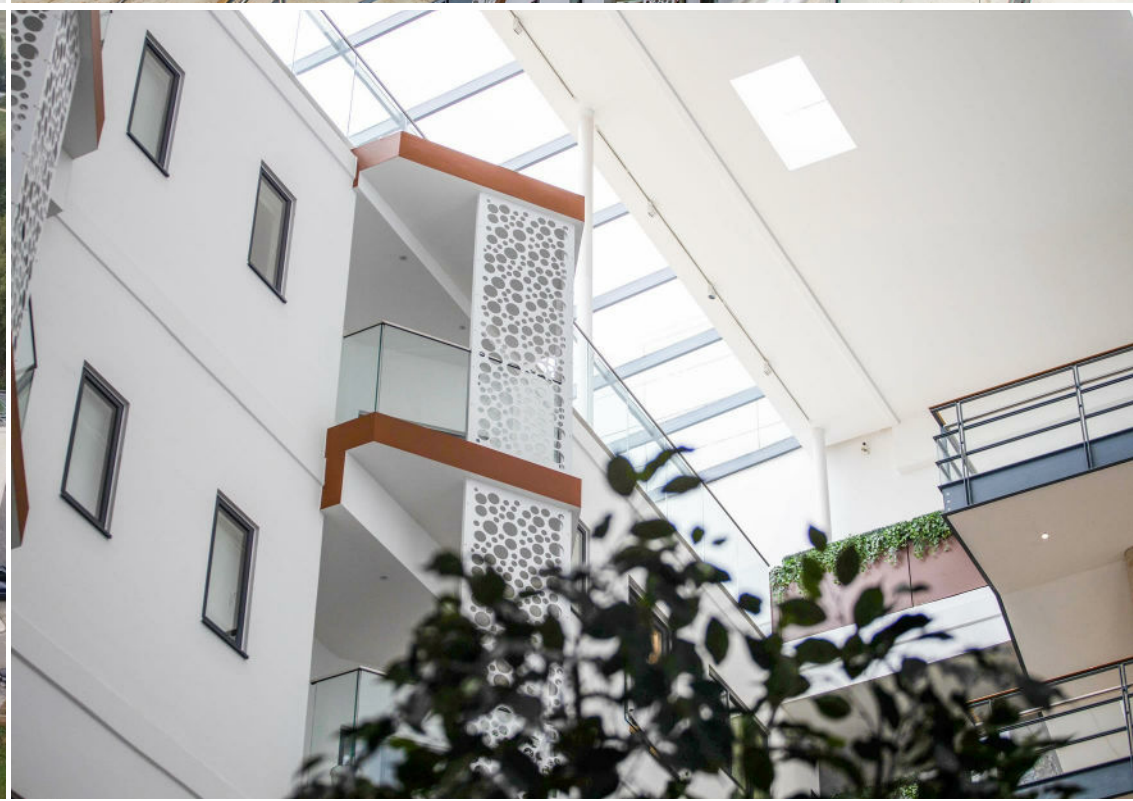
## Edinburgh Gate, Harlow, CM20 2GS

\*\*\*Investment\*\*\*

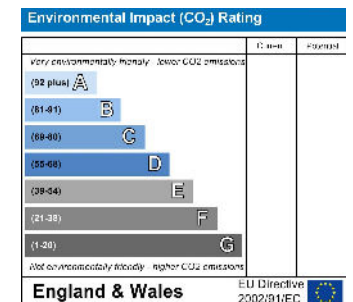
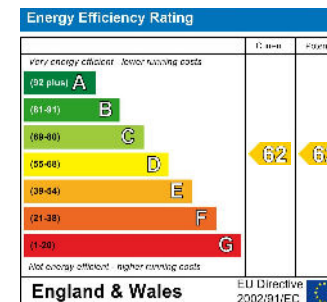
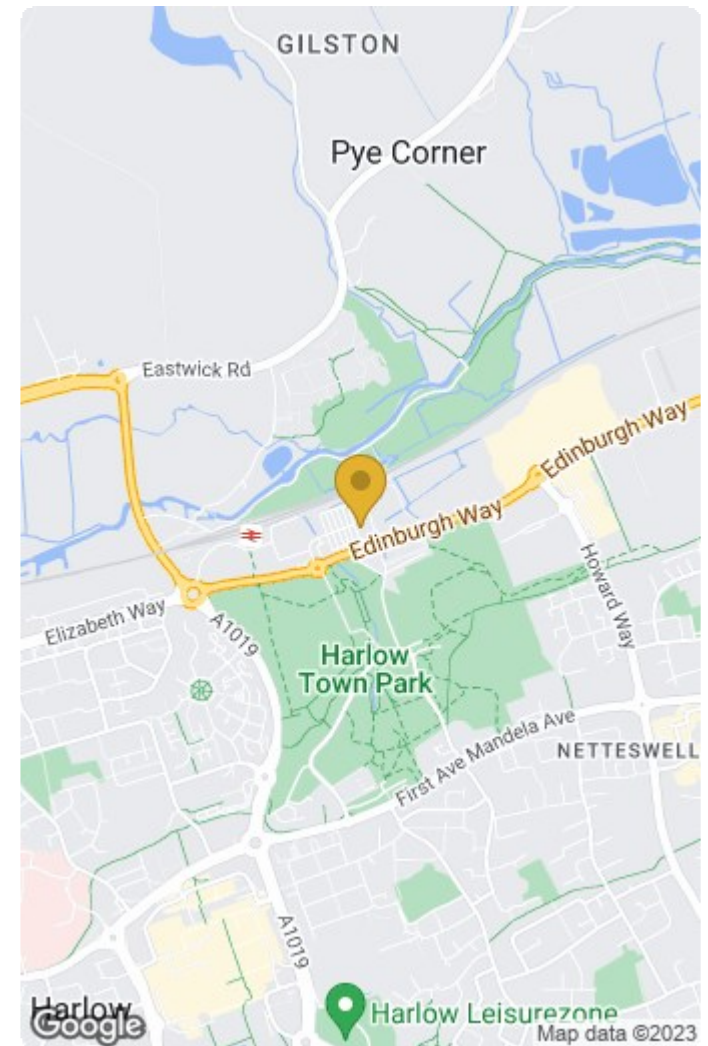
Currently tenanted. Ideal investment opportunity. Converted in 2019 is a VERY WELL PRESENTED one bedroom apartment . Located within a TWO MINUTE WALK TO HARLOW TRAIN STATION with its 30 minute trains to LIVERPOOL STREET. Within close distance to the town centre with its array of shops, leisure facilities and cinema complexes. Internally the property provides excellent living space, fully integrated kitchen appliances, bathroom and good storage space plus PARKING SPACE. Please call Lanes to arrange a viewing!











**IMPORTANT NOTICE TO PROSPECTIVE PURCHASERS**

We are not qualified to test any apparatus, equipment, fixtures and fittings or services so cannot that they are in working order or fit for their intended purpose. We do not have access to property deeds or lease documents so prospective purchasers should rely only on information given by their solicitors on relevant matters. Measurements are approximate and are only intended to provide a guide.